



Ted Walls,

STATE OF NORTH CAROLINA
DEPARTMENT OF TRANSPORTATION

MICHAEL F. EASLEY
GOVERNOR

LYNDO TIPPETT
SECRETARY

MEMO TO: Roadway Design Project Engineers
FROM: Jay A. Bennett, PE
State Roadway Design Engineer
DATE: October 21, 2008
SUBJECT: Concrete Transitional Section for Catch Basins and Drop Inlets

Beginning with the January 20, 2009 Letting, two additional pay items have been added to Transport:
Concrete Transitional Section for Catch Basins – Per Each
Concrete Transitional Section for Drop Inlets – Per Each.

The Drainage Summary Sheets in the cell library have been modified to reflect the changes. Please begin using the new Drainage Summary Sheets with the January 20, 2009 Letting.

For additional information on the Concrete Transitional Section see Randy Garris's memo dated August 26, 2008 located on the Roadway webpage at:
<http://ncdot.gov/doh/preconstruct/highway/roadway/policymemos/Design/concretetransition.pdf>

If you have any additional question, please call Jay A. Bennett, PE at (919) 250-4016.

S 48" & UNDER)

UNIT	QUANTITY	UNIT PRICE	TOTAL LF. FOR PAY QUANTITY SHALL BE COL. 'A' + (L3 X COL. 'F')	TYPE OF GRATE			CATCH BASIN	DROP INLET	CONCRETE TRANSITIONAL SECTION
				E	F	G			
				C.B. STD. 840.01 OR STD. 840.02					FRAME, GRATES AND HOOD STANDARD: 840.03
									D.I. STD. 840.14 OR STD. 840.15
									D.I. FRAME & GRATE STD. 840.16
									G.D.I. TYPE 'A' STD. 840.17 OR 840.20
									G.D.I. TYPE 'B' STD. 840.18 OR 840.27
									G.D.I. TYPE 'D' STD. 840.19 OR 840.28
									G.D.I. FRAME WITH GRATE STD. 840.23
									G.D.I. FRAME WITH TWO GRATES STD. 840.22

JAB/tw

Attachments

cc: Dewayne Sykes, PE
Scott Blevins, PE
Randy Garris, PE
Cynthia Perry, PE

MAILING ADDRESS:
NC DEPARTMENT OF TRANSPORTATION
ROADWAY DESIGN UNIT
1582 MAIL SERVICE CENTER
RALEIGH NC 27699-1582

TELEPHONE: 919-250-4016
FAX: 919-250-4036

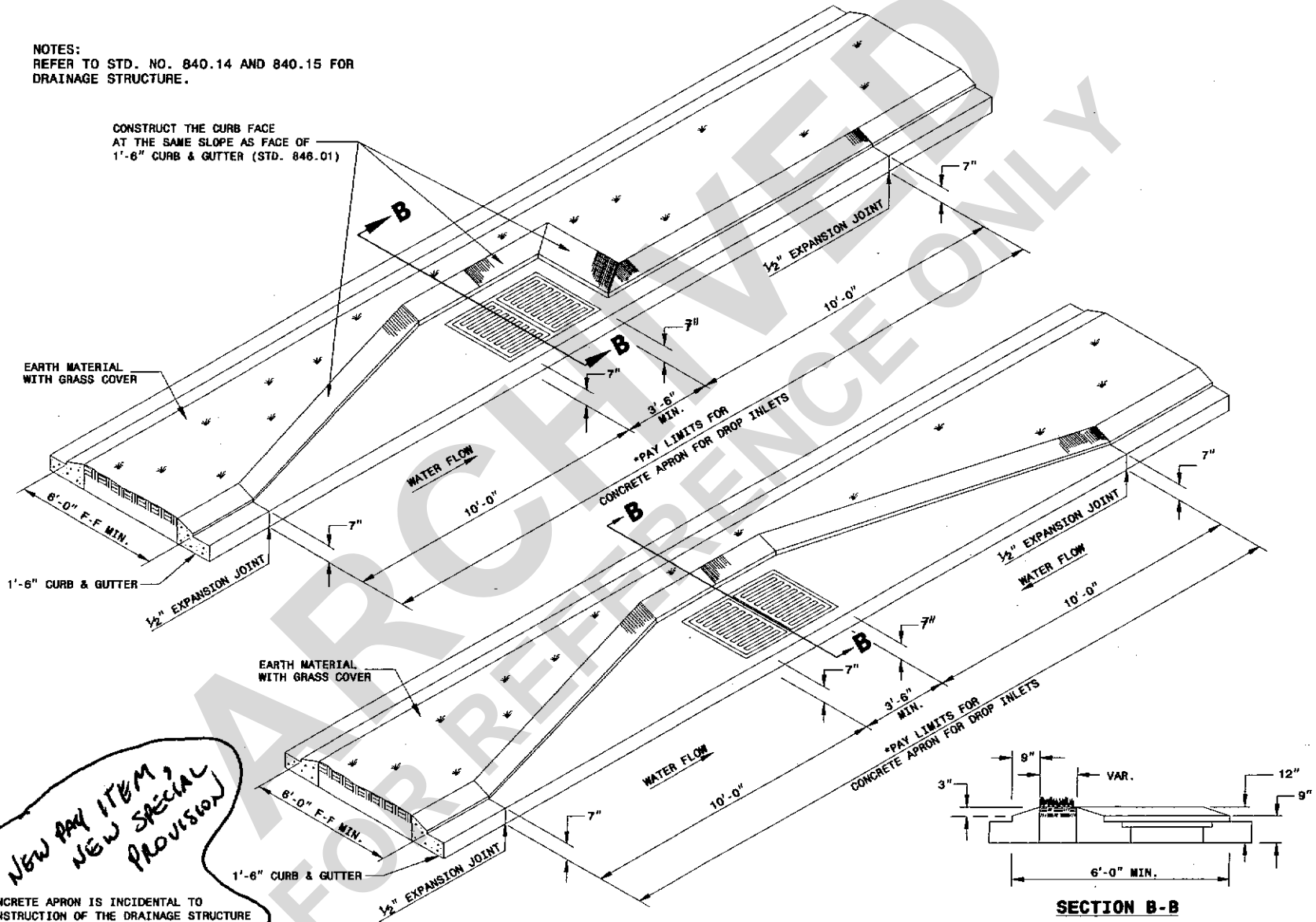
WEBSITE: WWW.NCDOT.ORG/DOH

LOCATION:
CENTURY CENTER COMPLEX
BUILDING A
1000 BIRCH RIDGE DRIVE
RALEIGH NC

ENGLISH STANDARD DRAWING FOR
METHOD FOR PLACEMENT OF
DROP INLETS IN GRASSED MEDIAN
(USING 1'-6" CURB & GUTTER)

NOTES:
REFER TO STD. NO. 840.14 AND 840.15 FOR
DRAINAGE STRUCTURE.

CONSTRUCT THE CURB FACE
AT THE SAME SLOPE AS FACE OF
1'-6" CURB & GUTTER (STD. 846.01)



*NEW PAY ITEM,
NEW SPECIAL
PROVISION*

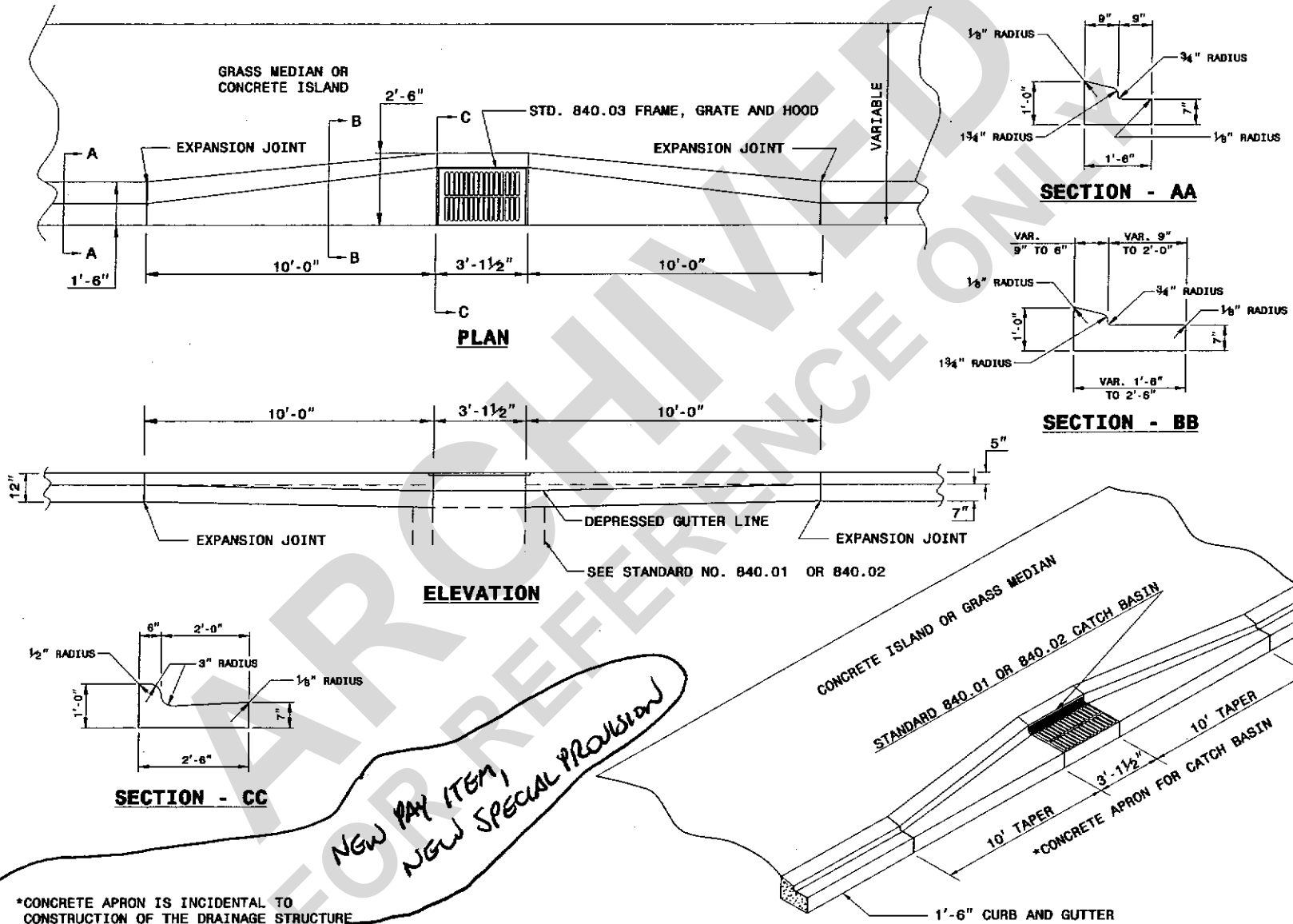
*CONCRETE APRON IS INCIDENTAL TO
CONSTRUCTION OF THE DRAINAGE STRUCTURE

SECTION B-B

ENGLISH STANDARD DRAWING FOR
METHOD FOR PLACEMENT OF
DROP INLETS IN GRASSED MEDIAN
(USING 1'-6" CURB & GUTTER)

NOW: PER EACH, CONCRETE TRANSITIONAL SECTION FOR DROP INLETS

7-06



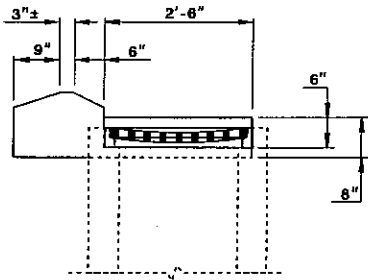
*NEW PAY ITEM,
NEW SPECIAL PROVISION*

*CONCRETE APRON IS INCIDENTAL TO CONSTRUCTION OF THE DRAINAGE STRUCTURE

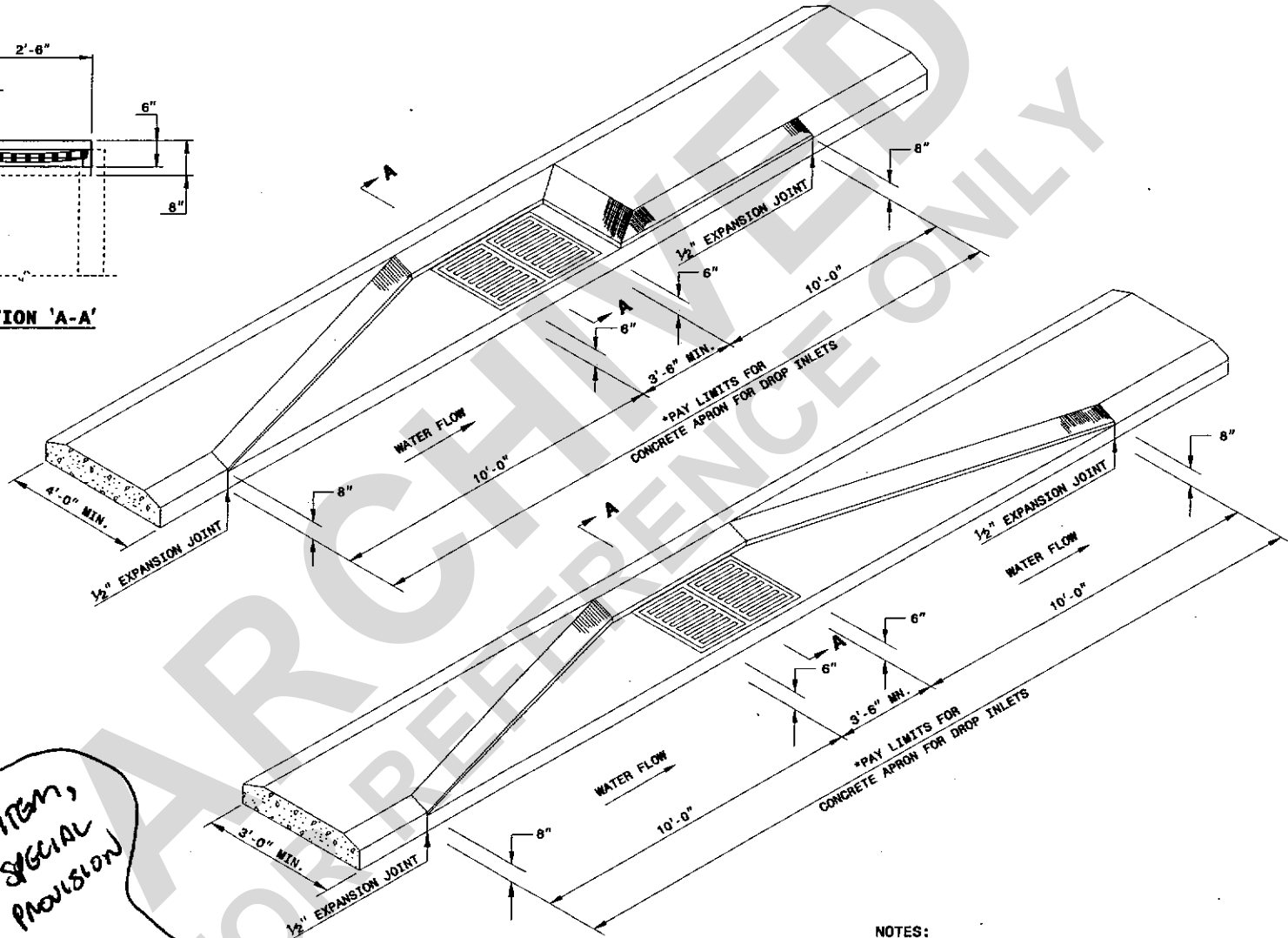
7-06

NOW : PER EACH, CONCRETE TRANSITIONAL SECTION FOR CATCH BASINS

ENGLISH STANDARD DRAWING FOR
**METHOD FOR PLACEMENT OF
DROP INLETS IN CONCRETE ISLANDS**



SECTION 'A-A'



*New pay item,
new special
provision*

*CONCRETE APRON IS INCIDENTAL TO
CONSTRUCTION OF THE DRAINAGE STRUCTURE

- NOTES:
-REFER TO STD. NO. 840.14 AND 840.15 FOR
DRAINAGE STRUCTURE.
-REFER TO STD. NO. 840.16 FOR GRATE AND FRAME.

ENGLISH STANDARD DRAWING FOR
**METHOD FOR PLACEMENT OF
DROP INLETS IN CONCRETE ISLANDS**

Now: PER EACH, CONCRETE TRANSITIONAL SECTION FOR DROP INLETS